

He Is Exalted

Words and Music by
Twila Paris

VERSE

F F/A B \flat B \flat /C C 7



He is ex - alt - ed, the King is ex - alt - ed on — high, — I will praise — Him.

5

F F/A B \flat C/B \flat B \flat /C C D^{sus} D



He is ex - alt - ed, for - ev - er ex - alt - ed, and I will praise His name! —

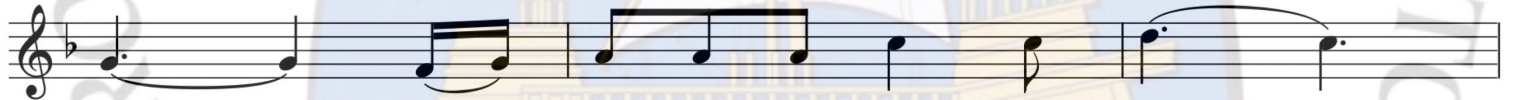
CHORUS

11 Gm Dm/F C/E C F Am B \flat F/A Gm Dm/F



He is the Lord, — for - ev - er His truth shall reign. Heav - en and

16 C/E C F Am B \flat F/A



earth — re - joice in His ho - ly name. —

19 Gm B \flat /F E \flat B \flat /C F



He is ex - alt - ed, the King is ex - alt - ed on high! —

TAKE UP YOUR CROSS

REFRAIN (♩ = ca. 76)

Capo 3: (D)
F

(Bm7)
Dm7

Take up your cross, —

take up your cross — and fol - low me. Take up your cross, —

take up your cross, — take up your cross — and fol - low

me. —

VERSE 1

1. Who - ev - er wish - es to come af - ter me must de - ny him -

1. self; — who - ev - er wish - es to come af - ter me must

(Em7) (C) (A) (Asus4) (A)
Gm7 Eb C C sus4 C

1. take up his cross, and fol - low me.

VERSE 2

(A/C#) (Bm) (Bm/A) (Gmaj7) (D/F#) (Em7)
C/E Dm Dm/C Bbmaj7 F/A Gm7

2. Who - ev - er wish - es to save his life will lose it,

(Asus4) (A) (Asus2) (F#/A#) (Bm) (Bm/A)
C sus4 C C sus2 A/C# Dm Dm/C

2. who - ev - er los - es his

(Gmaj7) (D/F#) (Em7) (C) (G/B) (Asus4) (Asus2) (A)
Bbmaj7 F/A Gm7 Eb Bb/D C sus4 C sus2 C

2. life for my sake will find it.

VERSE 3 (Bridge)

(Bb) (Bm) (Bb) (D)
Db Dm Db F

3. Why gain the whole world but lose your soul?

(Bb) (Bm) (Bb) (Gm) (Asus4) (A)
Db Dm Db Bbm C sus4 C

3. Why gain the whole world but lose your soul?

UBI CARITAS

REFRAIN: (♩ = ca. 60) All

Capo 3: (D) (Em) (Asus4) (A) (Bm) (Bm/A) (A/G) (G)
 F Gm Csus4 C Dm Dm/C C/B♭ B♭

*U - bi ca - ri - tas _____ est ve - ra, _____ est ve - ra: _____

(D) (D/F#) (G) (D) (D/F#) 1-5 Final
 F F/A B♭ F F/A (G) (G) B♭ B♭ to Verses (G) B♭ Fine

dim. , *rall. last time*

De - us i - bi est, De - us i - bi est. est.

VERSES: Cantor(s)/Choir

(Em) (Em/D) (C) (D) (Em) (Em/D) (C) (Bsus4)
 Gm Gm/F E♭ F Gm Gm/F E♭ Dsus4

1. The love of Christ joins us to - geth - er. Let us re - joice in him,
2. In true com - mu - nion let us gath - er. May all di - vi - sions cease
3. May we who gath - er at this ta - ble to share the bread of life
4. For those in need make us your mer - cy, for those op - pressed, your might.
5. May we one day be - hold your glo - ry and see you face to face,

(B) (Em) (A) (D) (G) (C) (C/B) (Asus4) (A) (Asus2) (A)
 D Gm C F B♭ E♭ E♭/D Csus4 C Csus2 C D.C.

1. and in our love and care for all now love God in re - turn. —
2. and in their place be Christ the Lord, our ris - en Prince of Peace. —
3. be - come a sac - ra - ment of love, your heal - ing touch, O Christ. —
4. Make us, your Church, a ho - ly sign of jus - tice and new life. —
5. re - joic - ing with the saints of God to sing e - ter - nal praise. —

Text: Refrain and vss. 1, 2, and 5 based on *Ubi Caritas*, 9th cent.; verses 3, 4, Bob Hurd, b. 1950; Spanish by Pedro Rubalcava, b. 1958.

Music: Bob Hurd; harm. by Craig Kingsbury, b. 1952.

Text and music © 1996, 2004, Bob Hurd. Published by OCP. All rights reserved.

*Where there is true charity, God is present.
 Donde hay caridad verdadera, allí está Dios.

ESTROFAS: Cantor(s)/Coro

(Em) (Em/D) (C) (D) (Em) (Em/D) (C) (Bsus4)
 Gm Gm/F Eb F Gm Gm/F Eb Dsus4

1. U - ni - dos co - mo un so - lo cuer - po, y en la co - mu - nión
 2. Reu - ni - dos y a - li - men - ta - dos, ya li - bres del ren - cor,
 3. Que el pan de vi - da que nos u - ne nos cam - bie el co - ra - zón
 4. Y pa - ra los ne - ce - si - ta - dos de a - mor y de bon - dad
 5. Con - cé - de - nos ya ver tu glo - ria y en tu pre - sen - cia es - tar;

(B) (Em) (A) (D) (G) (C) (C/B) (Asus4) (A) (Asus2) (A)
 D Gm C F Bb Eb Eb/D Csus4 C Csus2 C D.C.

1. y de - mos - tre - mos nues - tro a - mor a quien pri - me - ro a - mó. —
 2. vi - va - mos nues - tra co - mu - nión en Cris - to, Sal - va - dor. —
 3. y pa - ra dar al pró - ji - mo a - mor y sa - na - ción. —
 4. se - a - mos la es - pe - ran - za, jus - ti - cia y paz. —
 5. y, u - ni - dos a los san - tos, can - tar - te sin ce - sar. —



THE JESUS SONG

INTRO (♩ = ca. 63)

REFRAIN 1

411

Melody (Kbd)

Harmony

D Em/D D Em/D D A/C# Bm

Lord Je - sus Christ, Son of God,

Am7 D7/A G D/F# Em7 A D

have mer-cy on me, have mer-cy on me. Lord Je - sus

A F#7 Bm Am7/D D7 G D/F# Em7

Christ, Son of God, have mer-cy on me, have mer-cy on me.

A D Em/D

1 D Em/D 2 D Em/D

A - men.

REFRAIN 2

D A Bm7 Am7/D D7 G D/F# Em7

Je - sus, I trust in you. Je - sus, I trust in you.

Text: Based on the *Jesus Prayer* and the *Chaplet of Divine Mercy*; Tom Booth, b. 1961.

Music: Tom Booth; harm. by Scott Soper, b. 1961.

Text and music © 2014, Tom Booth. Published by Spirit & Song®, a division of OCP. All rights reserved.

Asus4 A D A D D/F# G D/F# Em7 A

You are the Son of the Living God. Je - sus, I trust in

Bm Esus4 E Em7 A D Em/D D Em/D
to Coda ⊕ *D.S. al Coda*

you. Je - sus, I trust in you.

⊕ CODA

Em7 A Bm Esus4 E Em7 A D Em/D

Je - sus, I trust in you. Je - sus, I trust in you.

D Em/D D A/C# Cadd9

Lord Je - sus Christ, Son of God, have

Em7 D/F# G A sus4 A

mer - cy on me, have mer - cy on me. A - men.

D Em/D D Em/D D Em/D rit. D

608

WERE YOU THERE

Capo 1: (D)

Eb (A) (Bm) (A) (D)
 Eb Bb Cm Bb Eb

1. Were you there when they cru - ci - fied my Lord? _____ Were you
 2. Were you there when they nailed him to the tree? _____ Were you
 3. Were you there when they laid him in the tomb? _____ Were you

(F#m)
Gm(Bm) (A) (D)
Cm Bb Eb(A)
Bb(D)
Eb(G)
Ab

1. there when they cru - ci - fied my Lord? _____ Oh! _____
 2. there when they nailed him to the tree? _____ Oh! _____
 3. there when they laid him in the tomb? _____ Oh! _____

(D)
Eb(G) (D)
Ab Eb(F#)
G(Bm)
Cm(G)
Ab(D/F#)
Eb/G

1. _____ Some-times it caus - es me to trem - ble, trem - ble,
 2. _____ Some-times it caus - es me to trem - ble, trem - ble,
 3. _____ Some-times it caus - es me to trem - ble, trem - ble,

(G) (A)
Ab Bb(G) (D/A)
Ab Eb/Bb(A) (Bm) (A)
Bb Cm Bb(D)
Eb

1. trem - ble. _____ Were you there when they cru - ci - fied my Lord? _____
 2. trem - ble. _____ Were you there when they nailed him to the tree? _____
 3. trem - ble. _____ Were you there when they laid him in the tomb? _____

Text: 10 10 14 10; Spiritual; *Old Plantation Hymns*, Boston, 1899.Music: WERE YOU THERE; Spiritual; *Old Plantation Hymns*, Boston, 1899; guitar acc. © 1995, 1997, OCP. All rights reserved.

Note: When guitar and keyboard play together, keyboardists should improvise using the guitar chords above the melody.